

# 304 | Expo Roll-Up, single sided

## TECHNICAL GUIDE

### We recommend

200-310 g polyester bannermaterial

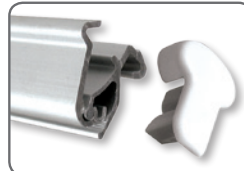
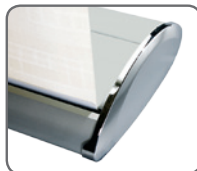
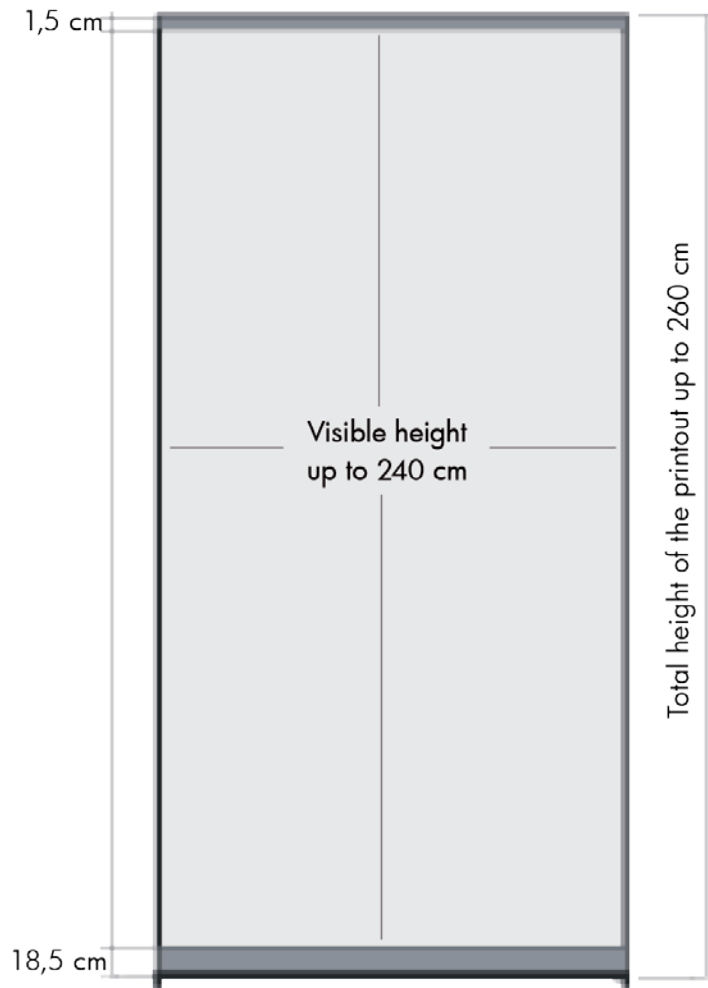


**GB** Roll-up with flexibel height. Produced in quality silver anodized aluminium. Solid construction and very nice design. Clamp profile in top and strong tape on the bottom roll makes the mounting of the material easy. Black luxury bag is included in the price. New tape must be mounted when changing the material. Delivered without banner. Packed with 4 pcs.

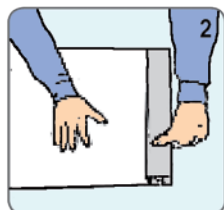
**DE** Roll-up mit variable Höhe - aus einem solidem silbereloxiertem Aluminium hergestellt. Kräftige Konstruktion im stilgerechten Design. Das Klebeband an der Rolle sowie die Klemmleiste oben, ermöglicht eine leichte Montage des Banners. Kräftige schwarze Luxus Tragetasche ist im Preis einbegriffen. Beim Wechseln des Banners muß neues Klebeband an der Rolle montiert werden. Wird ohne Banner geliefert. 4 Stück pro Karton.

**DK** Roll-up med variabel højde - udført i sølv- eloxeret aluminium. Kraftig konstruktion i stilrent design. Topprofil med klemmiste og kraftig 3M tape på bundrulle gør, at det er let at montere banneret. Kraftig sort luxus bæretaske er inkluderet i prisen. Ved udskiftning af budskab, skal ny tape monteres på bundrulle. Leveres uden banner. Pakket med 4 stk. pr. karton.

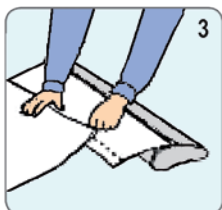
### Graphic dimensions:



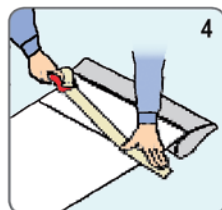
1 Make the front side of the graphic down on the desk, open the graphic clip to a suitable angle, then insert the top of graphic into the gap. Be sure to make tightly and right in order.



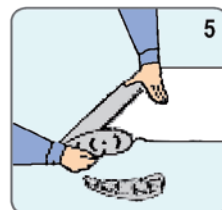
2 Make the flexible clip back until it is flat. Lock the graphic tightly.



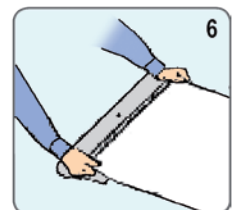
3 Make the front side of the graphic up and the back of roll-up up, put the leading paper in good place, tore down the double-glue film, make the back of graphic glue to it. **Notice:** When gluing, make it right in line with the black parallel.



4 Apply the glue tape to the joint between graphic and leading paper, firm it better.



5 Press the graphic with strength by hand, meantime, press the roll-up body. Pull the graphic out slightly, loose the lock latch and pull it out completely. **Notice:** Avoiding the graphic scrolling instantly.



6 Loose the hand pressing the graphic, but do not leave the graphic. Make it scroll gradually and adjust it while scrolling until the whole graphic smoothly scrolling in.

### Installation instruction

Art.no.	Bannersize	- visible part	Colour	Total W x H	Package Size	- weight	Pallet size	- quantity
4539	56 x 216 - 260 cm	56 x 196 - 240 cm	Alu	63 x 206 - 250 cm	13 x 67 x 25 cm	4,5 kg	80 x 120 x 220 cm	66 pcs.
4540	83 x 216 - 260 cm	83 x 196 - 240 cm	Alu	90 x 206 - 250 cm	13 x 92 x 25 cm	5,8 kg	80 x 120 x 220 cm	50 pcs.
4541	96 x 216 - 260 cm	96 x 196 - 240 cm	Alu	103 x 206 - 250 cm	13 x 108 x 25 cm	6,3 kg	80 x 120 x 220 cm	32 pcs.
4542	116 x 216 - 260 cm	116 x 196 - 240 cm	Alu	123 x 206 - 250 cm	13 x 128 x 25 cm	7,3 kg	80 x 120 x 220 cm	28 pcs.
4543	150 x 216 - 260 cm	150 x 196 - 240 cm	Alu	157 x 206 - 250 cm	13 x 162 x 25 cm	9,0 kg	80 x 120 x 220 cm	24 pcs.
4504	Spotlight 50 W		Alu		8 x 7 x 46 cm	0,4 kg	80 x 120 x 220 cm	400 pcs.